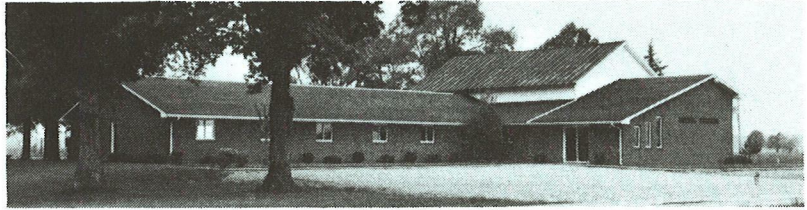


# Bethel Friends Church

1491 WEST — 600 SOUTH  
JONESBORO, IN 46938-9604  
PHONE 674-1777



Indiana Yearly Meeting of Friends

June 21, 2012

RE: Reconfiguration Task Force requested decision.

Bethel Friends Church appreciates the challenge of addressing the issue of what a yearly meeting is, as well as how it functions. Such consideration leads to the ultimate question of who we are, as a meeting, and what relationship do we adhere to, that helps define us as well as the yearly meeting we affirm.

Bethel Friends Church had its conception as a preparative meeting in the confines of a log cabin in 1864, in and under the care of Indiana Yearly Meeting. Since then our meetinghouse has moved and flourished to what it is today; a renovated and ever expanding structure. But more importantly our Meeting continues to flourish and thrive with the ever constant support and guidance of Indiana Yearly Meeting

It is evident that all organizations evolve. Neither Bethel nor Indiana Yearly Meeting is the same as they were back in 1864. Change is inevitable. However, how we change is crucial. Indiana Yearly Meeting has always prayerfully maintained Scriptural Truth with cultural shifts or societal changes. They have remained conscious that God's Will must not be compromised by either human desire or that His Holy Word be amended to keep current with cultural trends or personal preferences. The issue isn't whether we can make God relevant to our culture, but whether we can keep our culture relevant to God. In a culture with seismic shifts occurring, this is no small task.

It is in the knowledge that Indiana Yearly Meeting continues to strive to hold to God's Word and standards that we at Bethel Friends Monthly Meeting wholeheartedly affirm remaining as a subordinate member meeting under the direction of Indiana Yearly Meeting. We choose Option B and ask that the Indiana Yearly Meeting maintain its identity, values and standards as set by the current Faith and Practice.

Friends at Bethel are also aware that there are IYM meetings that have grown uncomfortable with the current standards and alignment. We pray these meetings find another yearly meeting or alignments that will better unite their leadings.

Sincerely submitted:  
Bethel Friends Church

Clerk of Monthly Meeting: Gregory Thompson

Clerk of Ministry and Oversight: Michael Brown